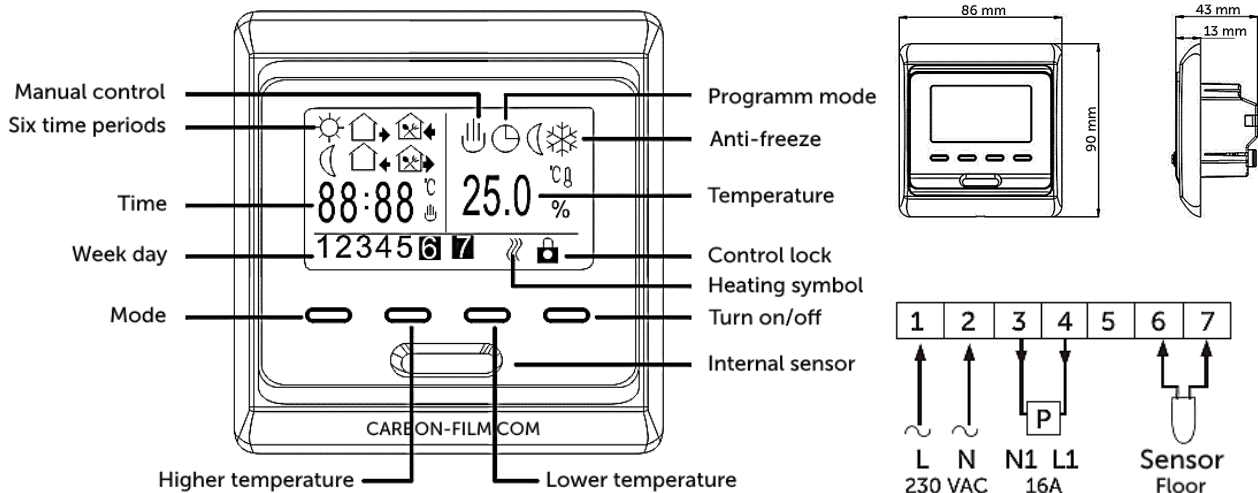


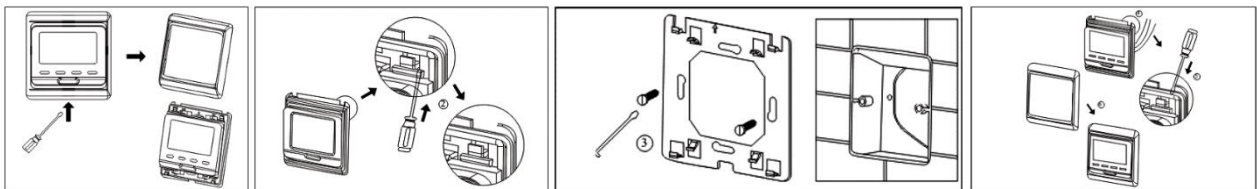
LARX LCD Thermostat

THERMOSTAT DESCRIPTION



CONNECTION SCHEME

- Connection must be done by a professional with the electrician certificate.
- If the thermostat shows "Err", check connection of the floor sensor.
- The current though the thermostat must be lower than 80 % (13 A) of the max. current (16 A).











THERMOSTAT CONTROL

1. POWER button – By pressing POWER button switch the thermostat on and off. The right temperature on its display shows the room temperature, the left is the set temperature. If there is a heating symbol shown (flame), the thermostat is currently heating.
2. Arrows UP a DOWN – By pressing buttons with arrows change the set temperature with step 0.5 °C. When holding both arrows longer than 5 sec lock the thermostat.
3. MODE button – By pressing MODE button (book) change between manual (hand symbol above room temperature) and week programme (clock symbol).
4. Set date and time – When the thermostat is switched on press MODE button together with arrow UP button for 5 sec. Change the values with arrows, move by MODE button. Confirm with POWER button.

THERMOSTAT PROGRAMMING

Press POWER button for 5 sec. Press MODE to move in settings. Confirm with POWER button.

Event	Symbol	Time	Setting	Default	Setting	
Workday	1 - Morning		06:00	By arrows UP and DOWN change the values	20 °C	By arrows UP and DOWN change the values
	2 - Leave		08:00		15 °C	
	3 - Lunch		11:30		15 °C	
	4 - Leave		12:30		15 °C	
	5 - Return		17:00		22 °C	
	6 - Night		22:00		15 °C	
Weekend	1 - Morning		08:00	22 °C		
	2 - Night		23:00	15 °C		

ADVANCED SETTINGS

Turn of the thermostat with POWER button, the display shows "OFF". Press together buttons MODE and POWER. By arrows UP and DOWN change the values. Move in settings with MODE. Confirm with POWER.

Symbol	Setting	Change by UP and DOWN buttons
ADJ	Temperature calibration	Temperature change
SEN	Temperature sensor mode	IN: only room sensor OUT: only floor sensor ALL: both sensors
LIT	Floor sensor limitation	Temperature change, range 5-60 °C
DIF	Switching differential	Differential change in degrees
LTP	Anti-freeze	Off or On
PRG	Period choice	Period 5 workdays + 2 weekend Period 6 workdays + 1 weekend Period 7 workdays
RLE	Choice power or potential-free output	Setting change
DLY	Potential-free output delay	Change of delay
HIT	Maximal allowed room temperature	Temperature change, max. 95°C
AFAC	Reset to default settings	Press arrow UP for 5 sec



more information

www.uhlikovefolie.cz/regulace